

# PRODUCT INFORMATION PACKET

marathon®  
Motors

Model No: 056B34D2025  
Catalog No: J019  
1-1/2,3450,DP,56C,1/60/115/230 (USE 5KC49NN2140X)  
Jet Pump Motors



Regal and Marathon are trademarks of Regal Rexnord Corporation or one of its affiliated companies.  
©2021 Regal Rexnord Corporation, All Rights Reserved. MC017097E

RegalRexnord



### Nameplate Specifications

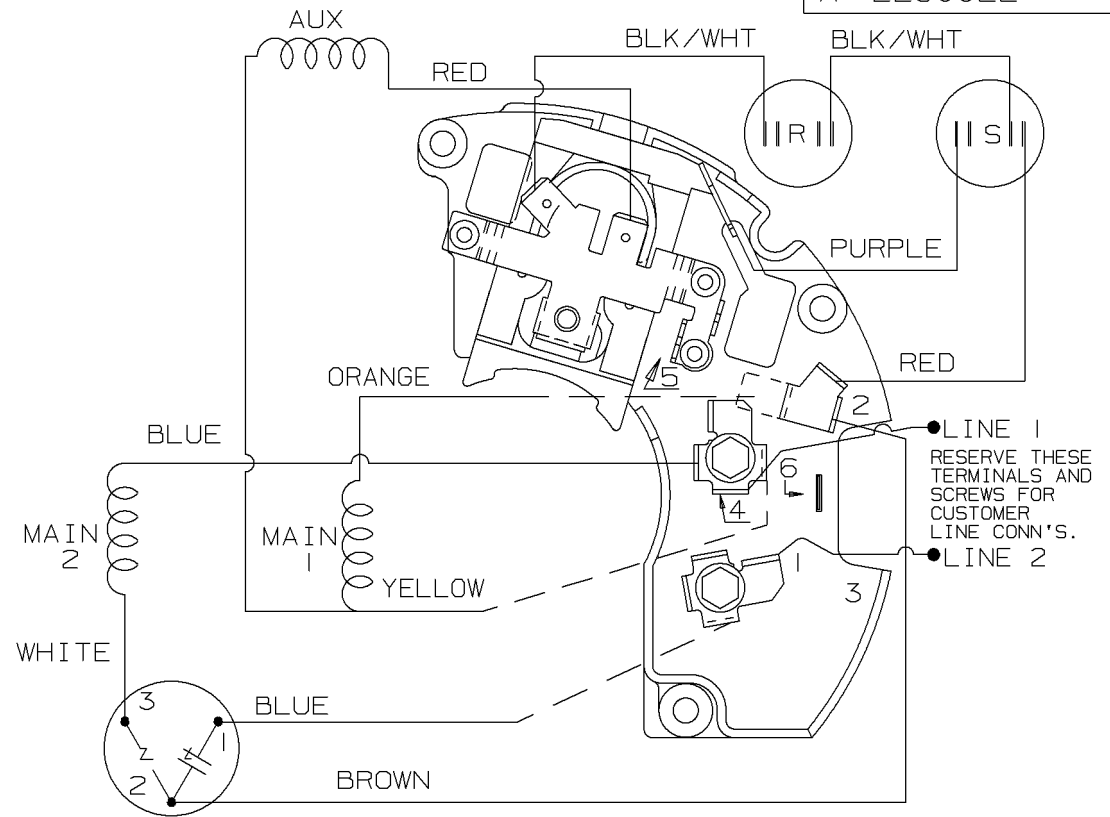
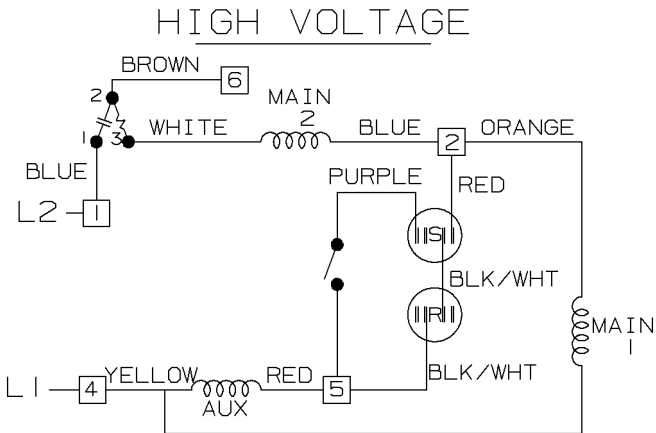
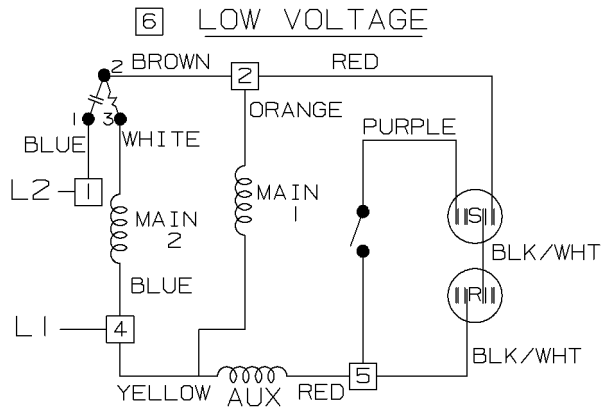
Output HP	<b>1.50 Hp</b>	Output KW	<b>1.1 kW</b>
Frequency	<b>60 Hz</b>	Voltage	<b>115/208-230 V</b>
Current	<b>13.4/7.4-6.7 A</b>	Speed	<b>3450 rpm</b>
Service Factor	<b>1.3</b>	Phase	<b>1</b>
Efficiency	<b>78.7 %</b>	Power Factor	<b>95.8</b>
Duty	<b>Continuous</b>	Insulation Class	<b>B</b>
Design Code	<b>No Design Code</b>	KVA Code	<b>H</b>
Frame	<b>56C</b>	Enclosure	<b>Drip Proof</b>
Thermal Protection	<b>Automatic</b>	Ambient Temperature	<b>40 °C</b>
Drive End Bearing Size	<b>6203</b>	Opp Drive End Bearing Size	<b>6203</b>
UL	<b>Recognized ( Not Protector)</b>	CSA	<b>Y</b>
CE	<b>N</b>	IP Code	<b>22</b>
Number of Speeds	<b>1</b>		

### Technical Specifications

Electrical Type	<b>Capacitor Start Capacitor Run</b>	Starting Method	<b>Across The Line</b>
Poles	<b>2</b>	Rotation	<b>Selective Counterclockwise</b>
Resistance Main	<b>0 Ohms</b>	Mounting	<b>Round</b>
Motor Orientation	<b>Horizontal</b>	Drive End Bearing	<b>Ball</b>
Opp Drive End Bearing	<b>Ball</b>	Frame Material	<b>Rolled Steel</b>
Shaft Type	<b>T</b>	Overall Length	<b>11.97 in</b>
Shaft Diameter	<b>0.625 in</b>	Shaft Extension	<b>1.88 in</b>
Assembly/Box Mounting	<b>F1 Only</b>		
Connection Drawing	<b>A-EE9002L</b>	Outline Drawing	<b>A-SS75503-800</b>

This is an uncontrolled document once printed or downloaded and is subject to change without notice. Date Created:10/12/2021





RESERVE THESE  
TERMINALS AND  
SCREWS FOR  
CUSTOMER  
LINE CONN'S.

VIEWING TERM END

LOW VOLTAGE CW ROTATION SHOWN.

FOR HIGH VOLTAGE  
CONNECT BROWN TERM 2 TO TERM 6.  
CONNECT BLUE TERM 4 TO TERM 2.

DUAL VOLTAGE  
CAP START/CAP RUN  
NOT REVERSIBLE WITH  
OVERLOAD PROTECTION

DASH LINES INDICATE LEADS CONNECTED  
TO MOTOR SIDE OF SWITCH.

FOR CORD CONNECTIONS::  
CONNECT BLACK LINE TO TERM.1  
CONNECT WHITE LINE TO TERM.4  
CONNECT GREEN TO GR. SCREW IN BKT.

5	01-28-1991	REVISED LINE 2 LOCATION CN 6427	RM	✓ MAX. SURFACE ROUGHNESS UNLESS NOTED OTHERWISE	UNLESS OTHERWISE SPECIFIED DIMENSIONS ARE IN INCHES TOL. ON XX± XXX±.005 XXXX±.0005 ANGLES±			
4	06-01-1990	ADDED INSTRUCTIONS FOR CORD CONN.	TOM	MATL SPEC				DRAWN BY TOM 05-22-1989
3	01-31-1990	INTERCHANGED BLUE WITH WHITE ON TERM 2.	TOM	FINISH				CHKD BY DRN 5-23-1989
REV	DATE	CHANGE	NAME	REFERENCE DRW.	WAUSAU, WISCONSIN 54401			APPD BY GK 04-08-1994
				PART NAME CONNECTION DIAGRAM 48 FR. DUAL VOLTAGE NOT REVERSIBLE	DRWG NO A- EE9002L			

SHOP BOOK

PURCHASED

DISTRIBUTION - WA - LB - WP - LM - BR

CADD FILE NO.

EE9002L